



Our Mission
To develop, support, and
advocate for nurse leaders
as they enhance the delivery
of health care.

A publication for the Kentucky Organization of Nurse Leaders Spring/Summer Edition

About KONL

Our vision is to be an engaged community of nursing leaders with one voice of advancing health in the Commonwealth.

2018 - 2020 Key Priorities:

Foster the development of Nurse Leaders

Promote the value of nursing

Improve the value and engagement of membership

Provide leadership that enhances the Nursing profession

Promote a culture of safety and quality in health care

A Look Inside	
About KONL	1
From the KONL President	2
2019 Board Members, Committee Chairs, and District Directors	3
Highlights from AONL Conference, Nurse Day activities, and KONL Spring Meeting	4-7
District Map	8



Upcoming Events

2019 KONL Fall Conference

Conference Title: Championing a Safe Nursing Workplace: Roles, Goals, and Strategies
Date: September 12th and 13th

Location: University of Louisville Conference Center-Selby Campus



Greetings KONL members! Happy Summer!

Hope this newsletter finds you enjoying the warmer weather and hopefully taking some time off of work to enjoy it with your family!

My hospital recently went through a Chest Pain accreditation survey (we were successful—YAY!) and on the last slide of the report presentation the surveyor left us with a quote from Don Berwick that really resonated with me and the work we do as

healthcare leaders. I want to share that quote with you and remind you that the work you all do every day is often not recognized or celebrated, but is so vital to our community and state.

‘The names of patients whose lives we save can never be known. Our contribution will be what did not happen to them. And, though they are unknown, we will know that mothers and fathers are at graduations and weddings they would have missed, and that grandchildren will know grandparents they might have never known, and holidays will be taken, and work completed, and books read, and symphonies heard, and gardens tended that, without our work, would never have been.’

-Don Berwick, Past President, Institute for Healthcare Improvement

Thank you for all you do!

Sincerely,

Kristin Pickerell, DNP, RN, NE-BC, CPHQ

2019 KONL President

Kristin.pickerell@nortonhealthcare.org



2019 KONL Board Members

President: Kristen Pickerell
Past President: Ina Glass
Secretary: Michelle Pendleton
Treasurer: Kathleen Myer
Information Officer: Mandi Walker

2019 Committee Chairs

Bylaws Chair: Michelle Pendleton
Scholarship Chair: Shannon Goff
Membership Chair: Lynne Warner Lynn
Program Chair: Donna Meador
Nominations Chair: Ina Glass
Legislative Chair: Kristin Pickerell
KHA Representative: Donna Meador
KBN Representative: Kelly Jenkins

2019 District Directors

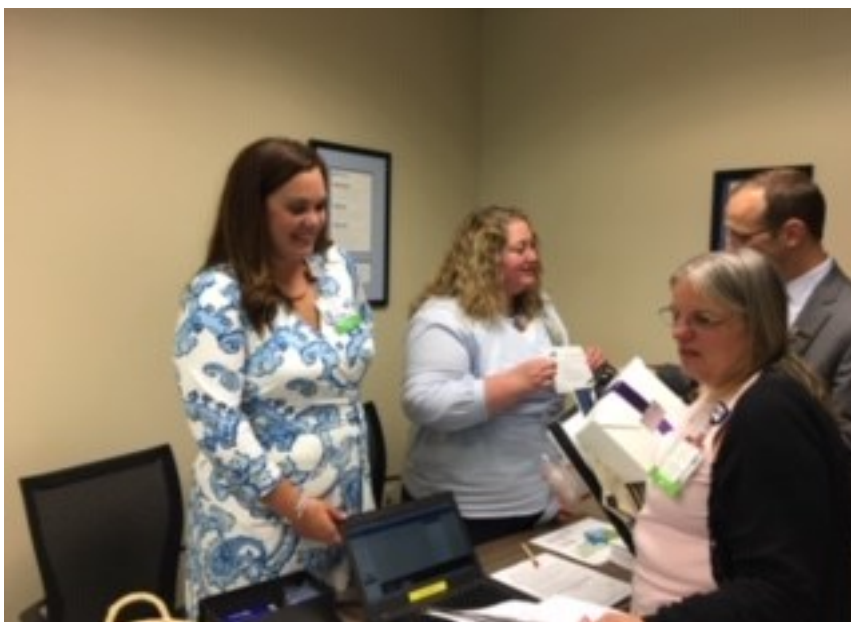
Bluegrass District: Debra Hampton
Cumberland District: Mendy Blair
Ohio Valley District: Joann Mattingly
Twin Lakes District: Kristi Melton

Special Coverage from the AONE conference

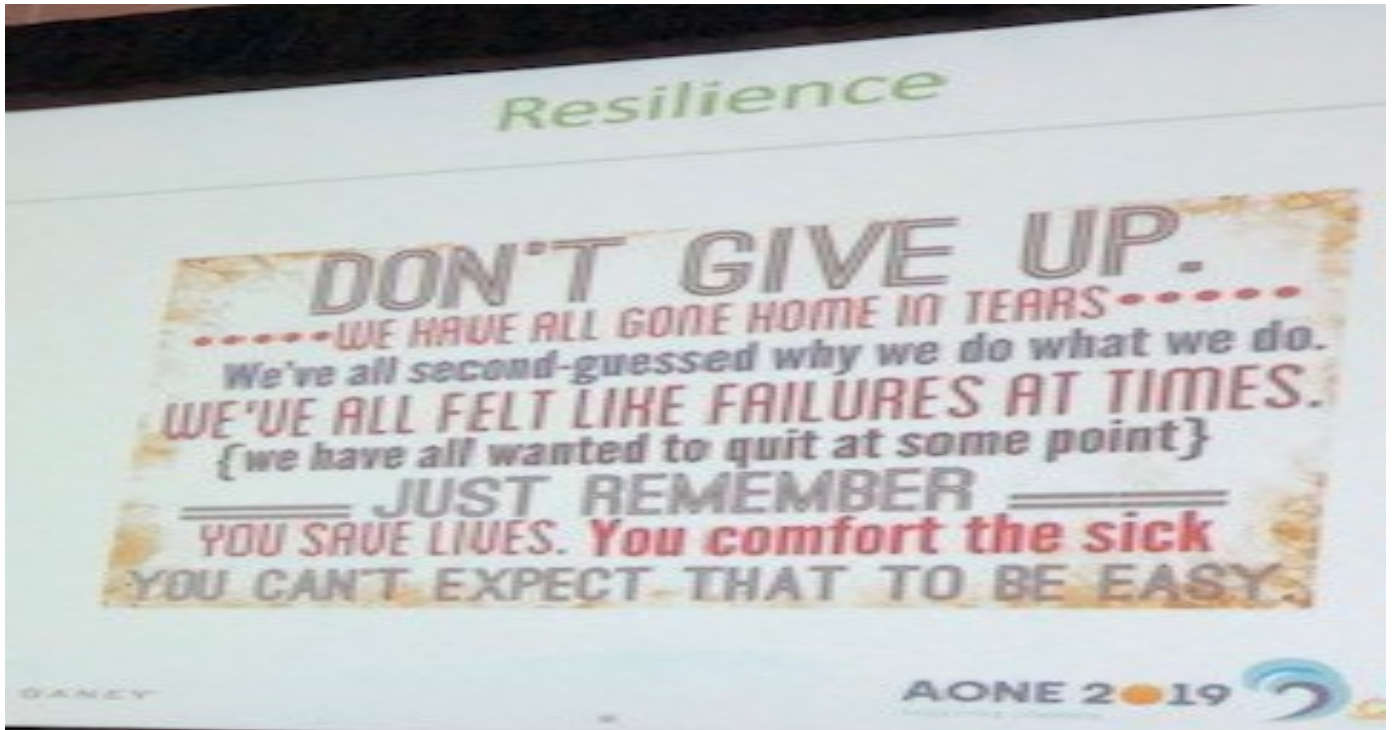
Karen Hill - Kentucky Nursing Leader



It was exciting to see Karen as one of the plenary speakers at AONL this year. Dr. Karen Hill is a leader in nursing leadership excellence. She is the editor-in-chief for the international, peer-reviewed Journal of Nursing Administration (JONA) and chief operating officer and chief nursing officer of Baptist Health Lexington. As editor-in-chief of JONA, Dr. Hill is well versed on current research relevant to nurse leaders. She is co-author of *Establishing a Research-Friendly Environment, A Hospital-Based Approach*. Karen did an outstanding job. Karen, we are very proud of you and your many accomplishments!



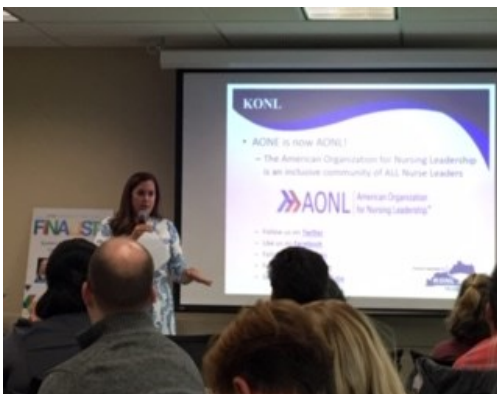
Kristin Pickerell and Michelle Pendleton work a vendor booth during Nurse Week activities at Norton Healthcare to promote KONL membership for the Ohio Valley.



Meaningful slide shown at the 2019 AONL Conference



JoAnn Mathingly presents the Substance Use disorder Harm Reduction program she developed and implemented at Norton Healthcare.



During National Nurse Week at Norton Healthcare, KONL President Kristin Pickerell provides an update from the AONE conference including the name change from AONE to AONL.



Ina Glass (Past KONL President), Lynne Warner Lynn (KONL Membership Chair), and Kristin Pickerell (KONL President) pose for a picture at the 2019 AONL conference in San Diego, CA.



Ina Glass, Karen Hill (CNO/COO at Baptist Health Lexington) Lynne Warner, and Mendy Blair (CNO at Baptist Health Richmond) at AONL conference.



2019 Scholarship Awardees

Cynthia Alvey and Lisa Wallace

Poster Presenters

Clinical Leadership with EBP:



1st place- Dr. Julie Wolford (Norton Healthcare). The evaluation of a multi-hospital system nurse residency program on new graduate nurse retention and engagement.

2nd place (unable to attend) - Dr. Ana Marie Linares (University of Kentucky College of Nursing). Assessing barriers to implementing birth kangaroo care in Kentucky birthing hospitals.



Quality Improvement with components of EBP:

1st place- Dr. Candice Gentry (Norton Healthcare). ICU CHG bathing: The effects of a targeted education intervention on staff.



Quality Improvement with components of EBP:

2nd place- Dr. Tracy Duncan (Norton Healthcare). Utilization of a workshop to assist frontline leaders to use high reliability science to perform apparent cause analysis.

Want to join KONL but not sure of your KONL district? The map below outlines the 4 regions

We welcome you to join so please visit the KONL website at
<http://kyonl.com/members/contact-us/>

or contact

KONL Membership Chair

Lynne Warner Lynn
Office: 859-239-2329
Email: llynn@emhealth.org

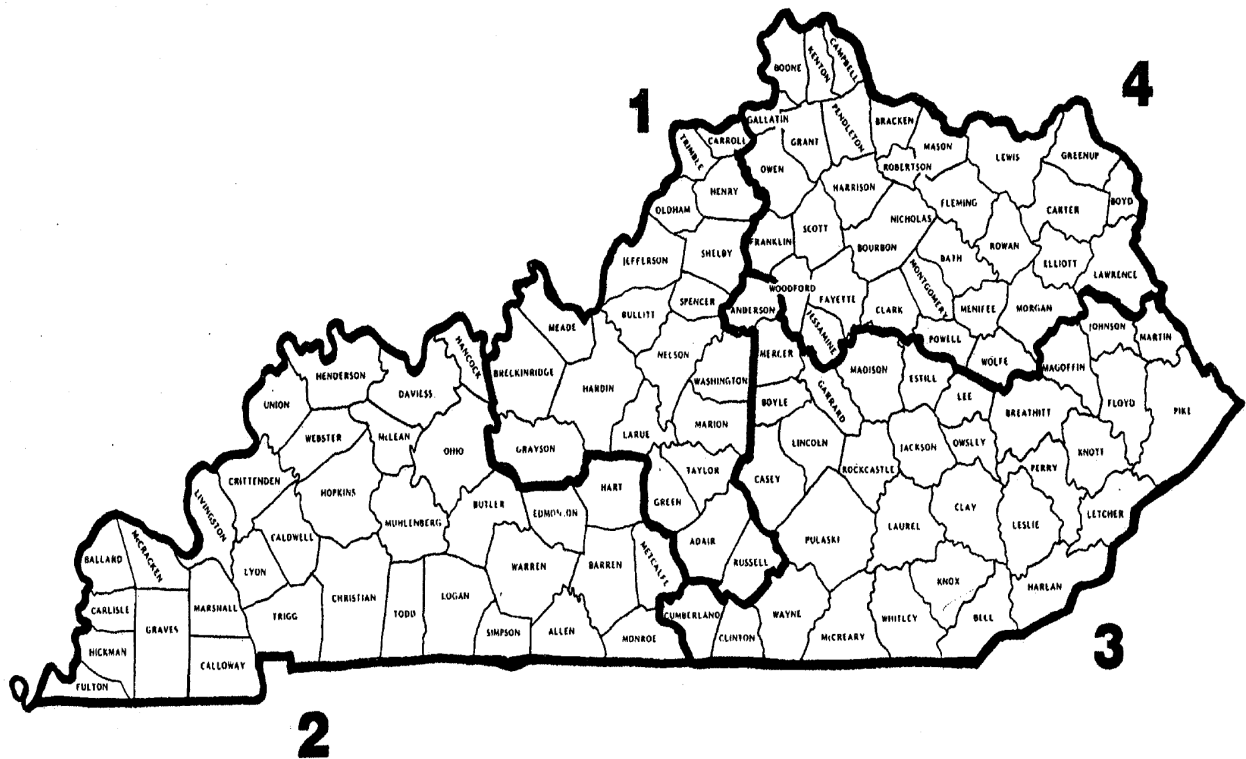
KONL Information Officer

Mandi Walker
Office: 502-217-5258
Email: mandiwa@ulh.org

Annual dues are \$60.00 and membership can occur throughout the year.
The process can be completed online or by paper application.

Kentucky Hospital Association

Region Boundaries



- Legend:**
- | | |
|--------------------------------|-------------------------------|
| 1. Ohio Valley Hospital Region | 3. Cumberland Hospital Region |
| 2. Twin Lakes Hospital Region | 4. Blue Grass Hospital Region |